

City of Baltimore

Electric Vehicle Charging Community Meeting





Welcome

- This meeting is being recorded
- The meeting slides and polls will be sent to all attendees in 1-2 weeks
- Use the chat function to ask a question or leave a comment. We will address questions at the end of the meeting.
- To participate in live polls:
 - Navigate to [Menti.com](https://www.menti.com)
 - Code:



Agenda

- About You
- Electric Vehicles in Baltimore City and the State of Maryland
- Electric Vehicle Charging
 - Levels of charging (1, 2, DC)
 - Existing public chargers in Baltimore City
 - Expansion and equitable distribution
- Question & Answer



Where in Baltimore City do you live?

[Join at Menti.com and use code 1162 7926]





What best represents you?

[Join at Menti.com and use code 1162 7926]

- a. I own or lease an electric vehicle
- b. I am considering owning or leasing an electric vehicle
- c. I am not considering owning or leasing an electric vehicle



What charging options are available to you?

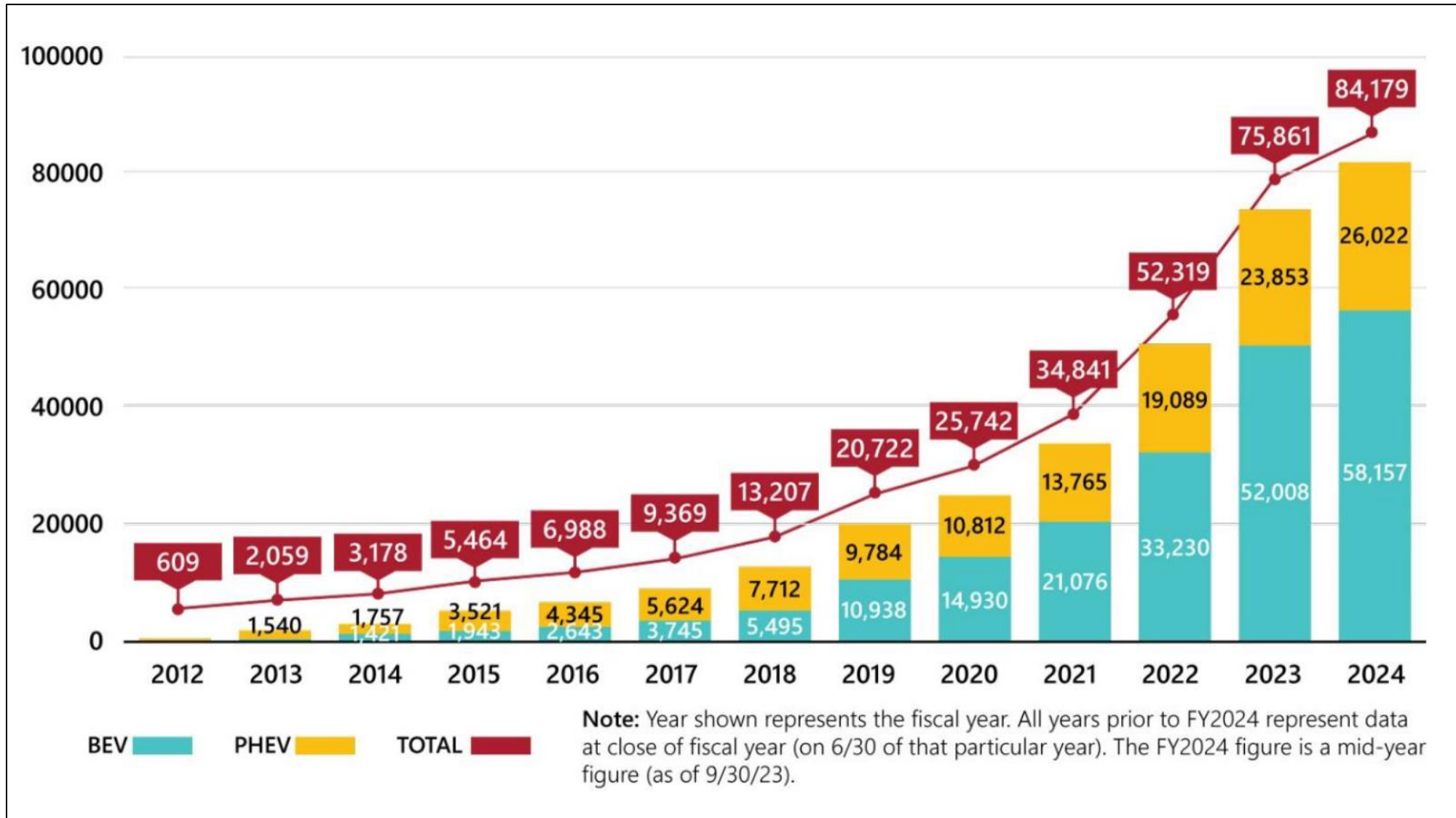
[Join at Menti.com and use code 1162 7926]

- a. I can charge at home in my garage or parking pad
- b. I can charge at my apartment or condo building
- c. I do not have access to a charger at home; I use public EV chargers nearby
- d. I don't know what charging options are available to me

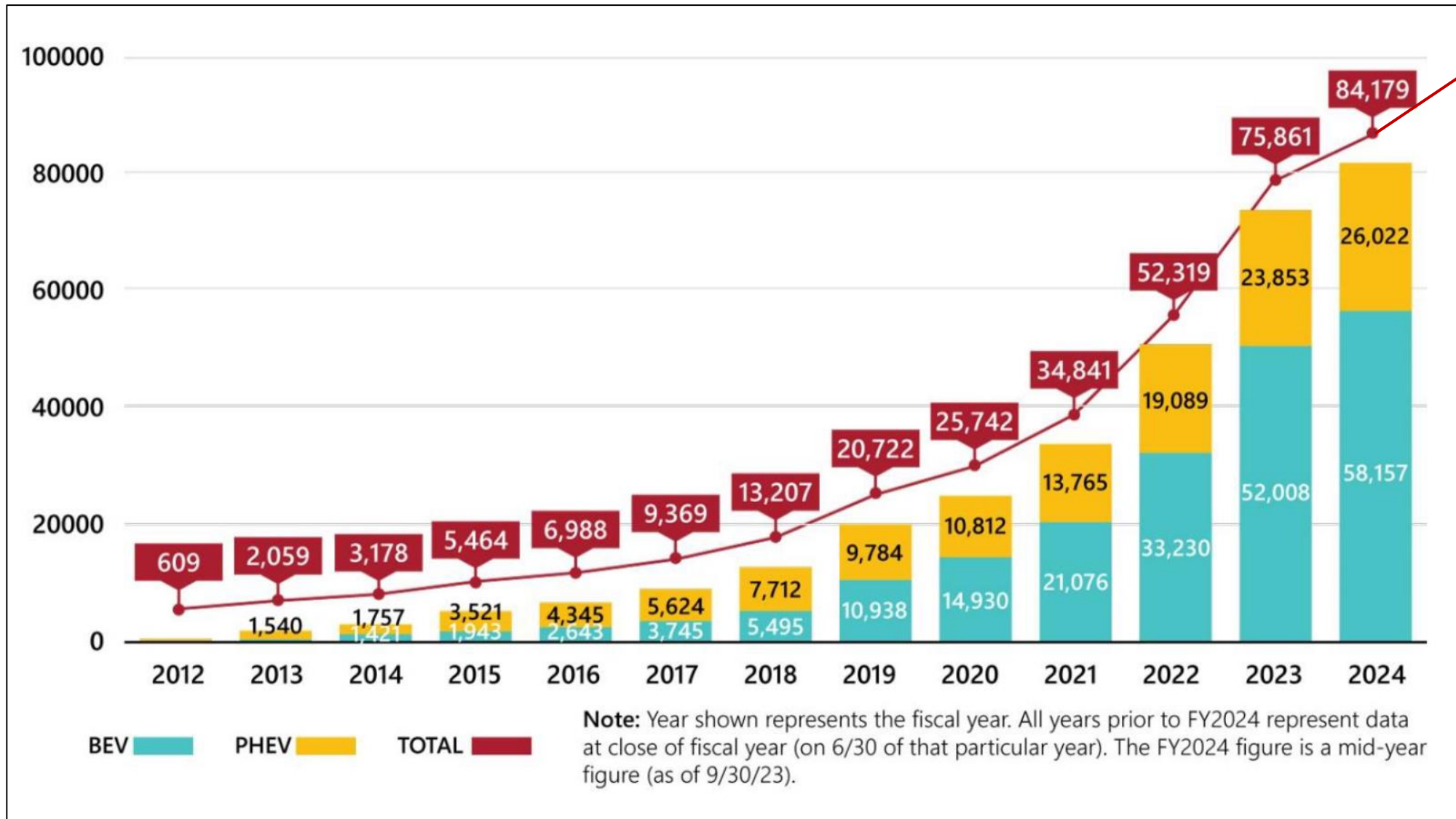


EVs in Baltimore City and the State of Maryland

Total Number of EVs Registered in Maryland



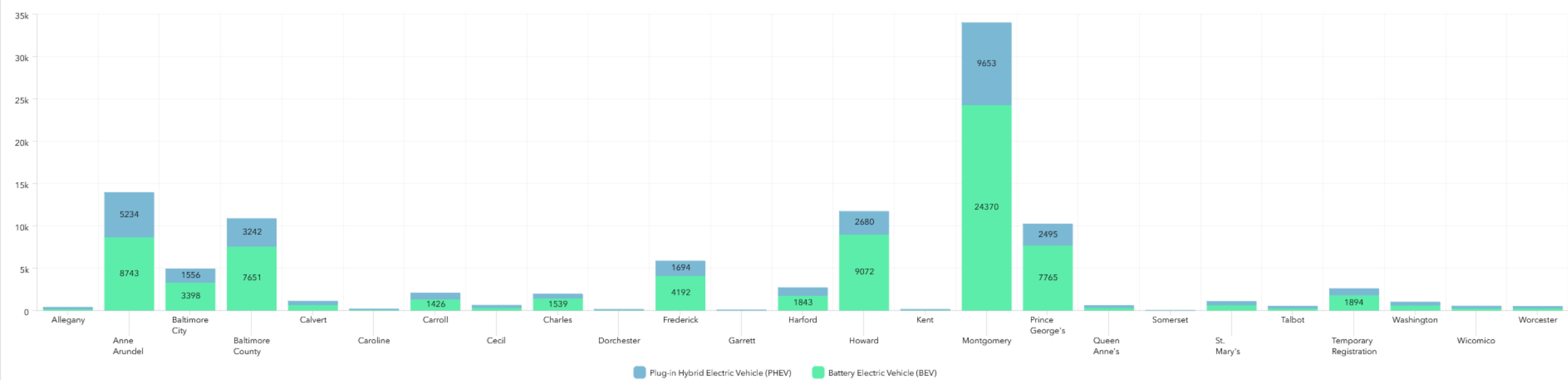
Total Number of EVs Registered in Maryland



As of June 30, there are 108,584 EVs registered in Maryland

EV Registration Data – June 30, 2024

Number of Registered BEVs and PHEVs by County



17.61

EVs per 1,000 People

108,584

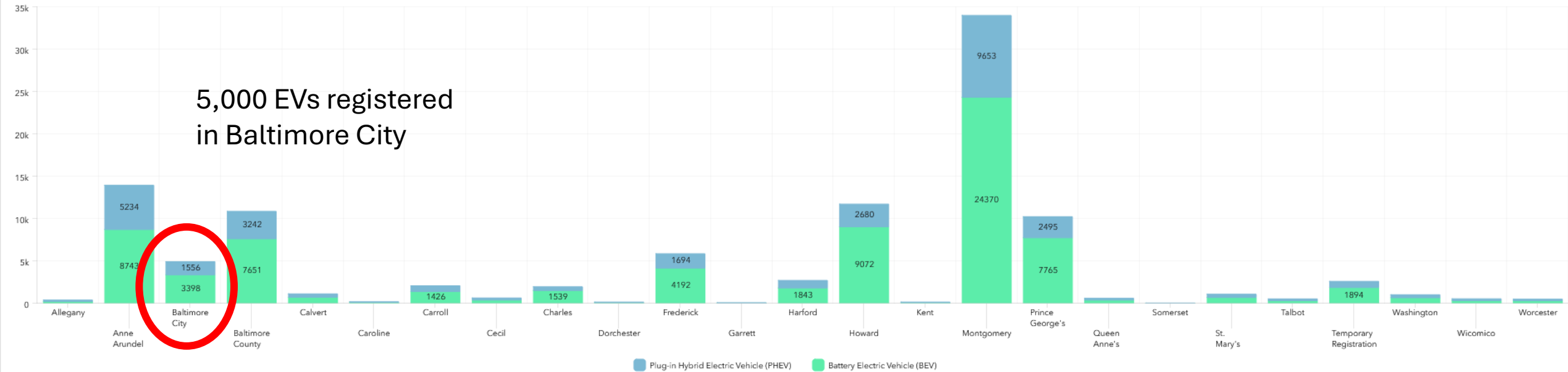
Registered EVs

Percentage of BEVs and PHEVs Registered



EV Registration Data – June 30, 2024

Number of Registered BEVs and PHEVs by County



5,000 EVs registered in Baltimore City

17.61

EVs per 1,000 People

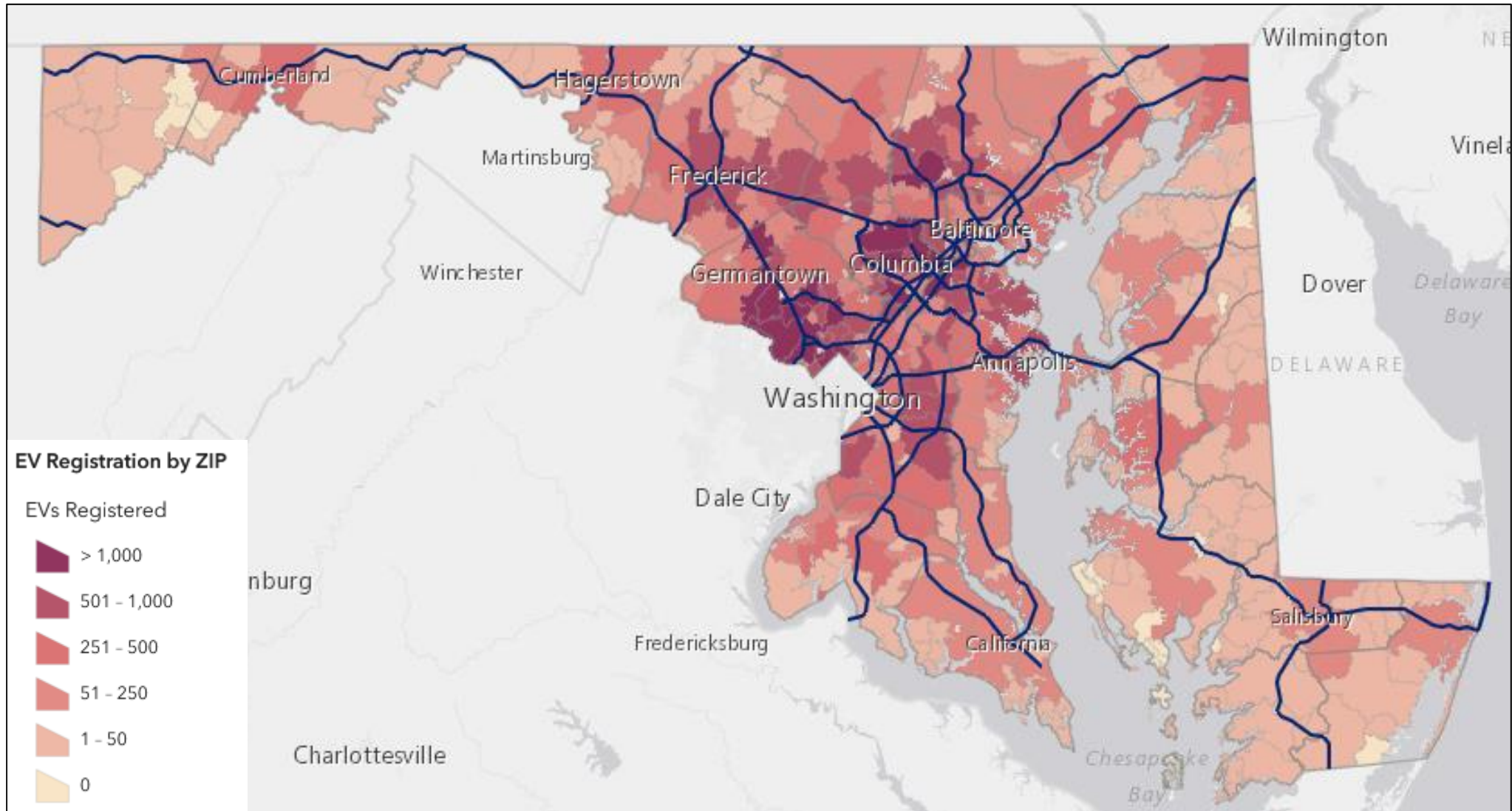
108,584

Registered EVs

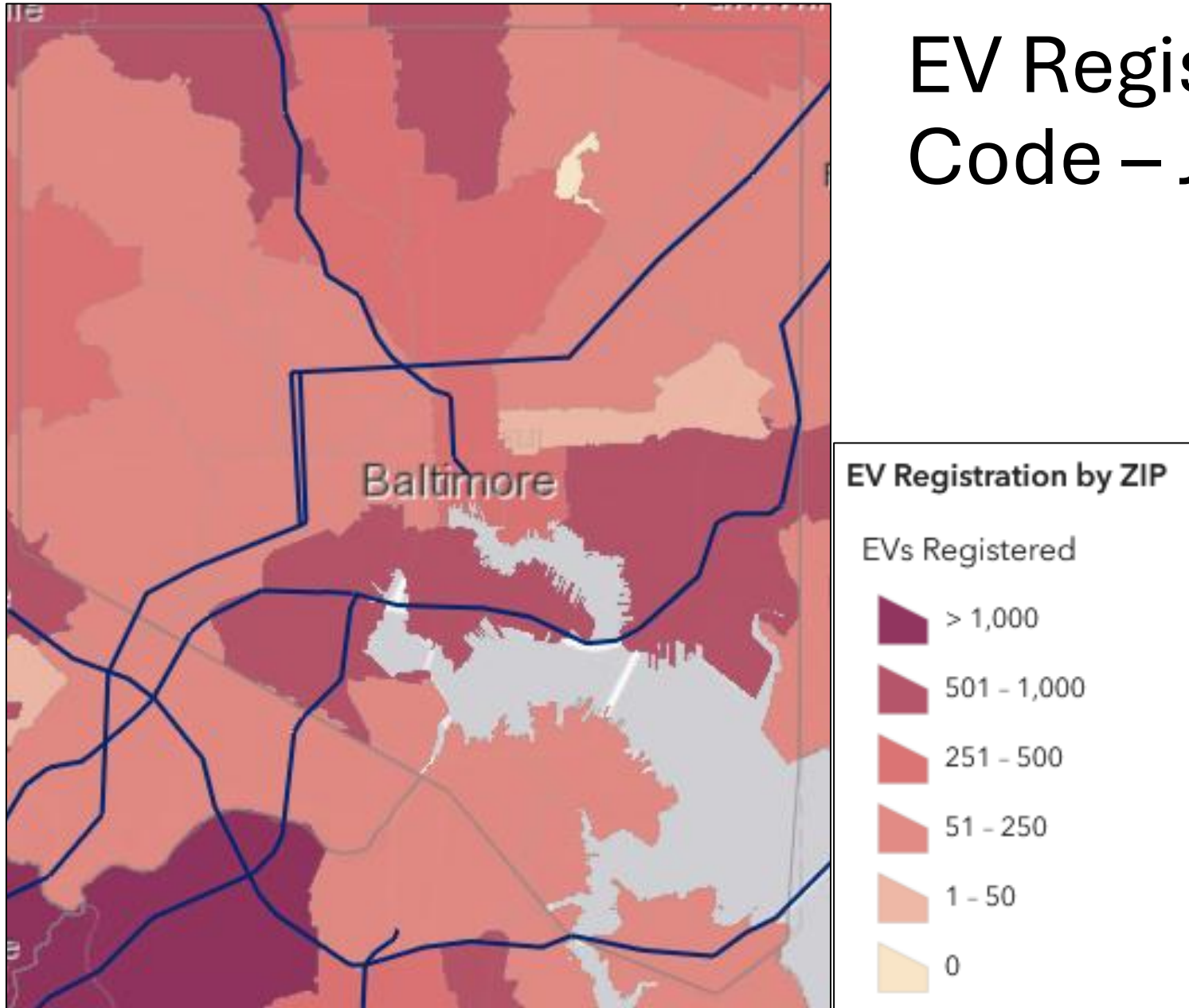
Percentage of BEVs and PHEVs Registered



EV Registrations by Zip Code – June 30, 2024

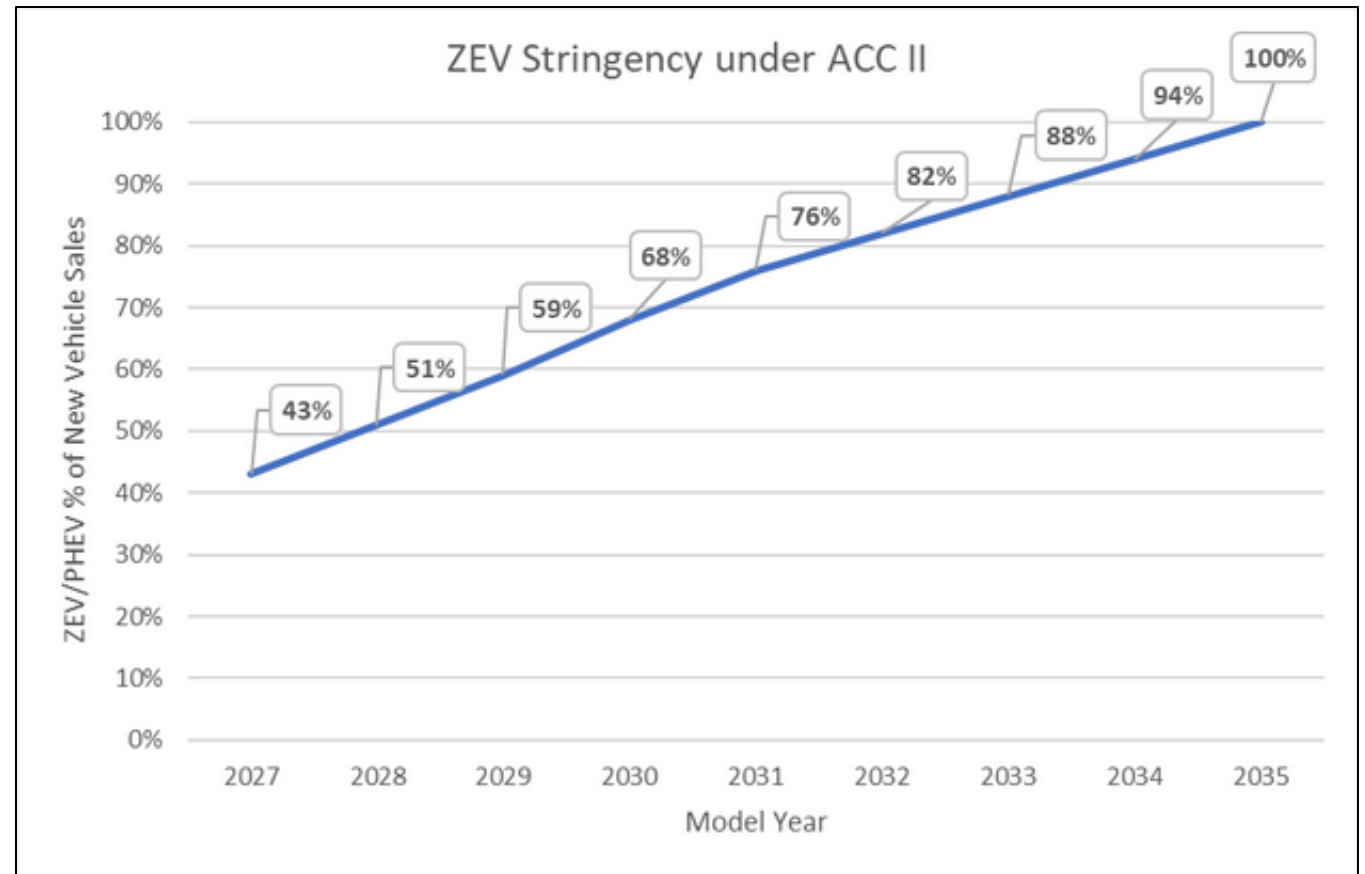


EV Registrations by Zip Code – June 30, 2024



Advanced Clean Cars II

- Adopted by the Maryland Department of the Environment in September 2023
- Requires manufactures to continuously increase the share of vehicles they sell that are electric
- 100% of **new** passenger car and light truck sales must be EV in model year 2035





EV Charging

Types of EV Chargers



Level 1

120 Volts

Typical Charge Duration: 6-10 hours

Range Per Hour of Charging: 5 miles



Level 2

208-240 Volts

Typical Charge Duration: 1-3 hours

Range Per Hour of Charging: 10-20 miles



Level 3

480 Volts

Typical Charge Duration: 30 minutes

Range Per Hour of Charging: 75+ miles



Have you used a publicly available EV charger?

[Join at Menti.com and use code 1162 7926]

- a. Yes
- b. No



Have you used a public EV charger on Baltimore City property or right-of-way?

[Join at Menti.com and use code 1162 7926]

- a. Yes
- b. No



What type of chargers are best for public charging?

[Join at Menti.com and use code 1162 7926]

- a. Level 1 charging
- b. Level 2 charging
- c. DC fast charging
- d. I'm not sure



What type of public charging location do you prefer?

[Join at Menti.com and use code 1162 7926]

- a. On-street (curbside) charging
- b. Charging “hub” – multiple chargers located at a parking lot or centralized location
- c. No preference

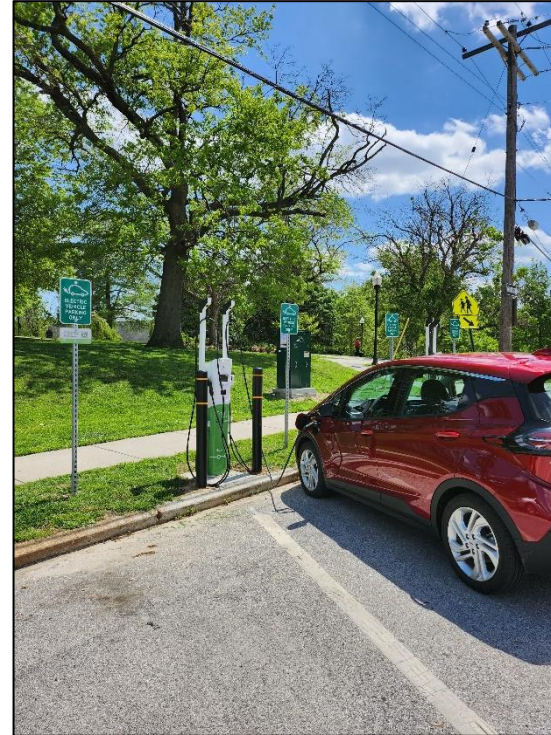
EV Chargers on Baltimore City Property or Right-of-Way



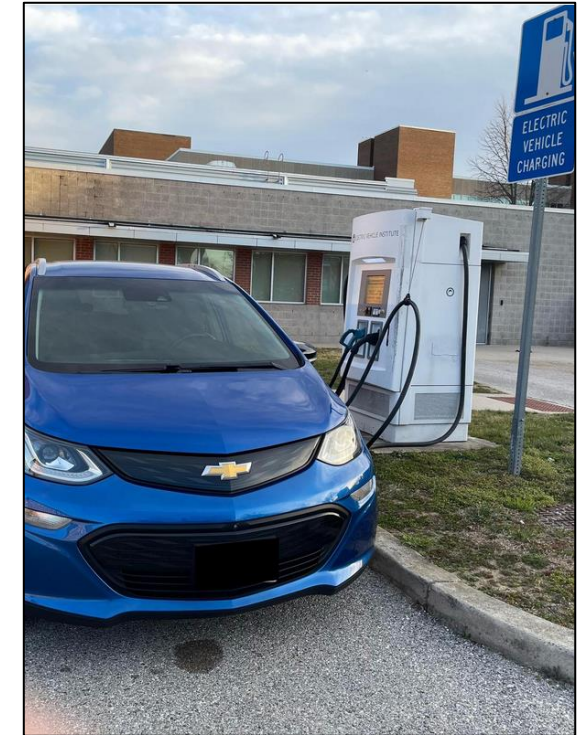
Parking Garages



Parking Lots





Rec & Parks

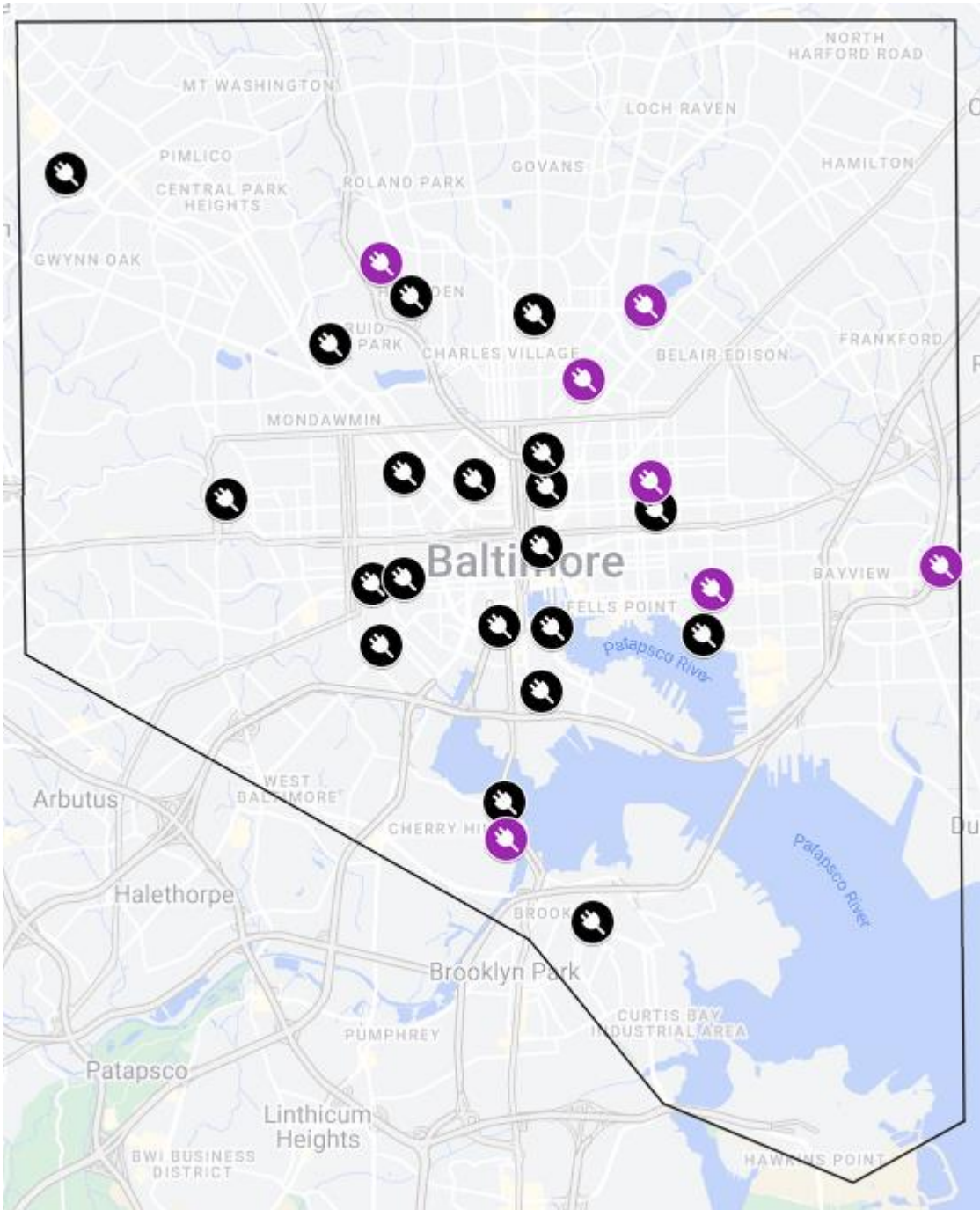


Enoch Pratt Free Library

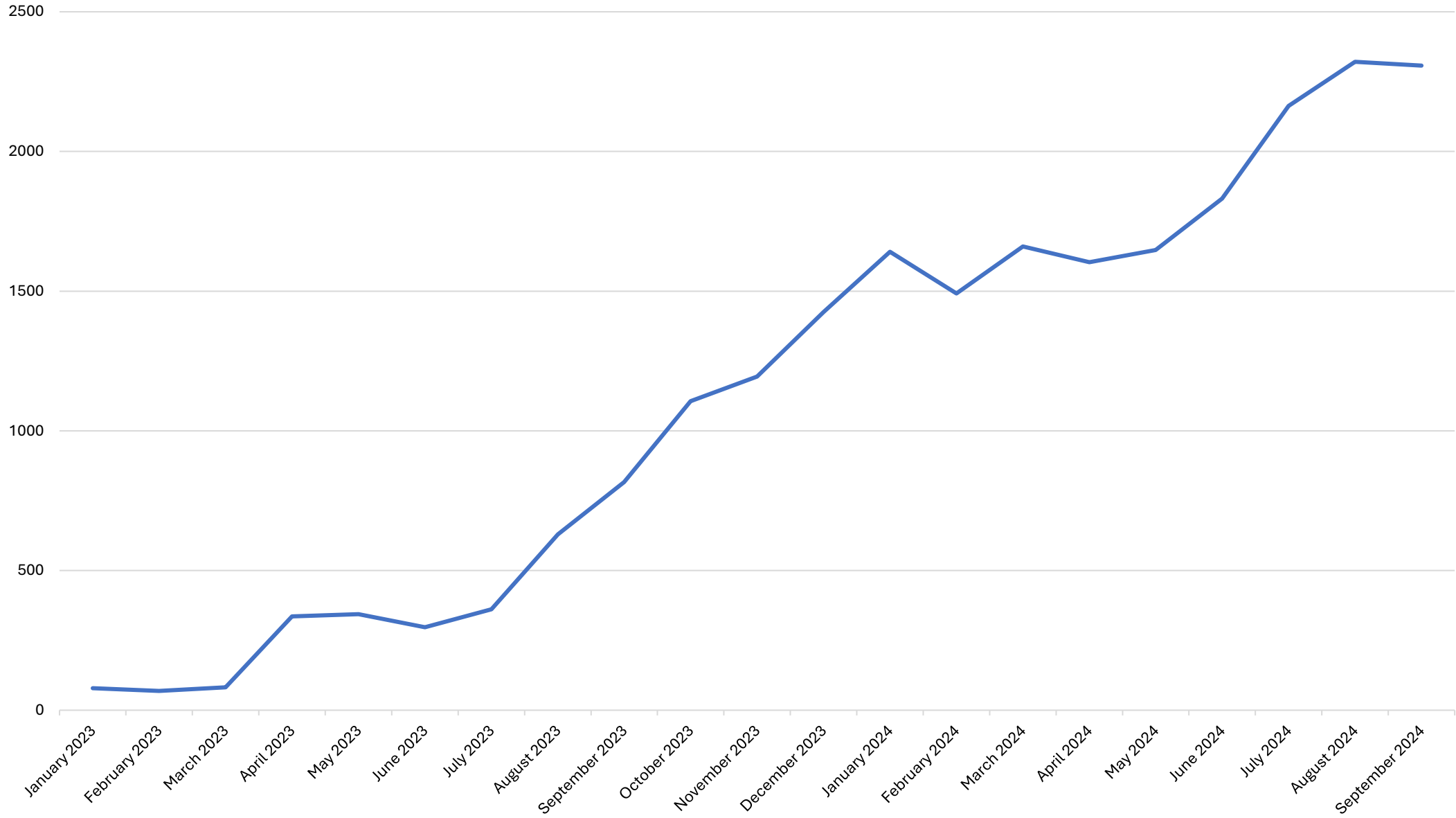
BGE Charging Locations on Baltimore City Property or Right-of-Way

Energized Sites	17
Minimum Number of Vehicles that Can Charge at Each Site	4
Number of Level 2 Charging Ports	70
Number of DC Fast Charging Ports	9

-  Existing site
-  Future site



Number of Charging Sessions Per Month



EV Charger Utilization Trends

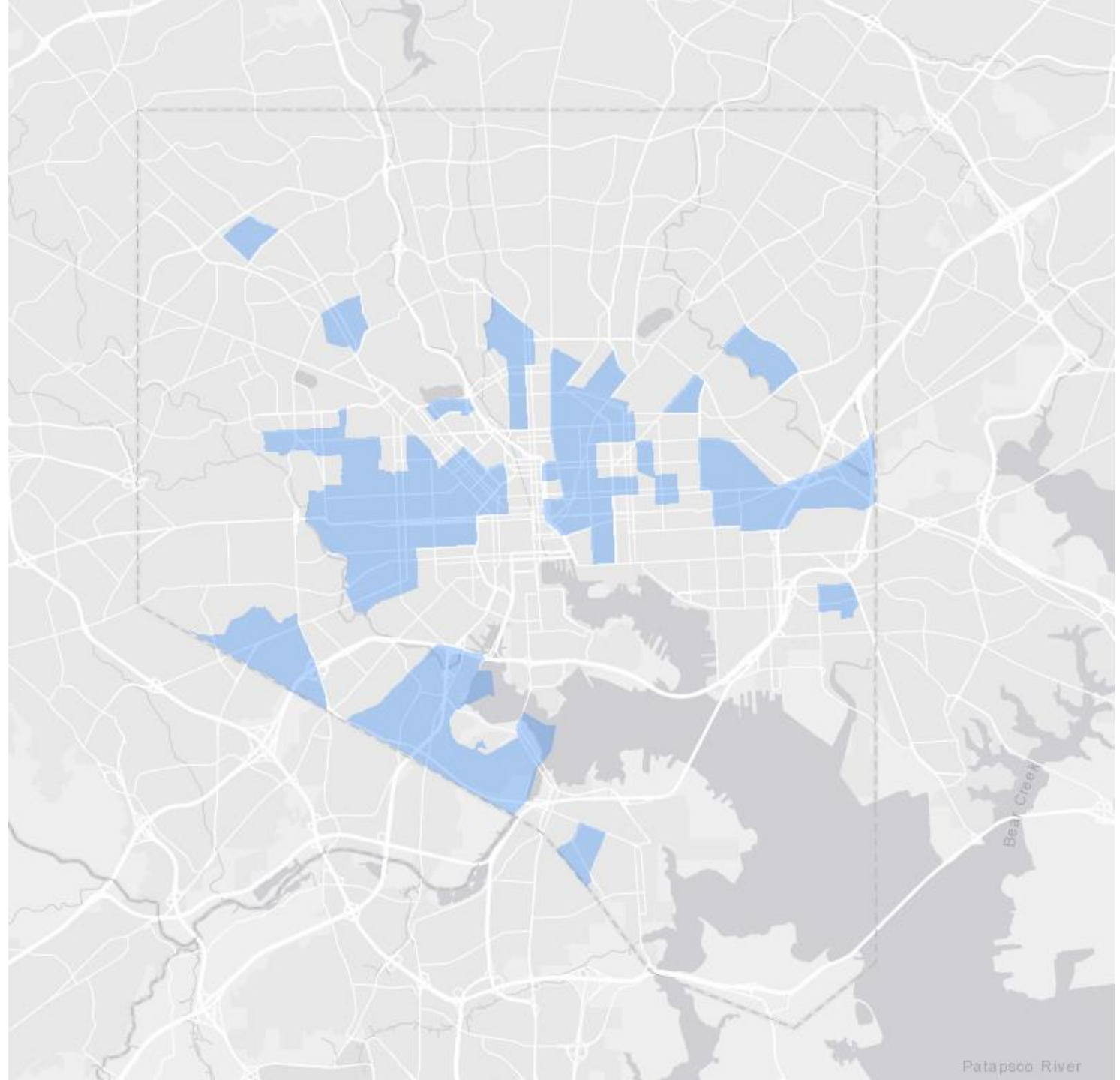
- Growing trend in number of charging sessions
- High use locations:
 - Combination of both Level 2 and DC fast chargers
 - Located near dense housing and within walking distance to amenities
- Equity zone locations show some of the highest utilization numbers
- Success of “charging hub” model



Charging at Carroll Park

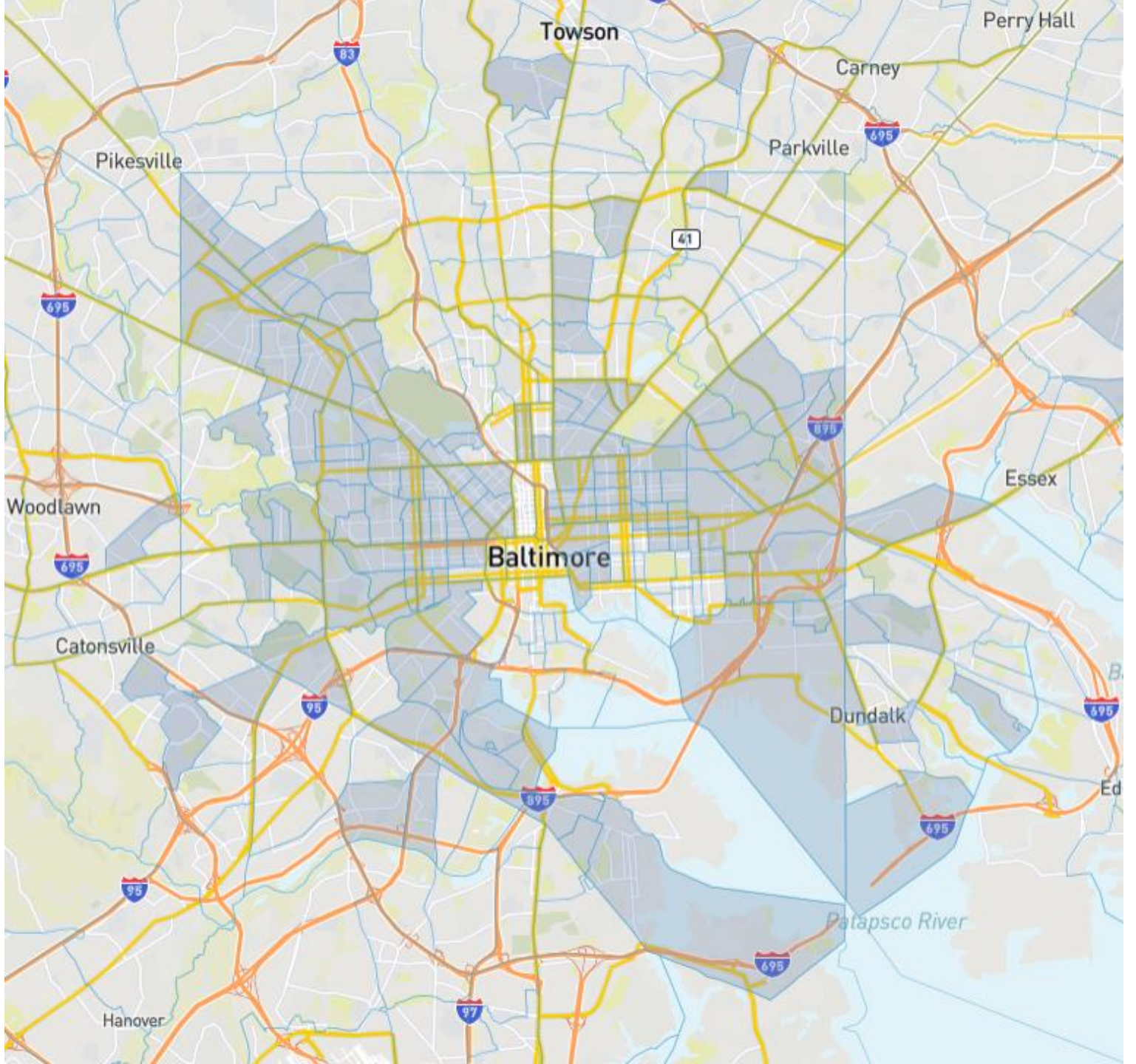
Equity

- Goal of 30% of EV charging locations to fall in “equity zones”
- Equity Zone: census tracts with the lowest quartile of median household income



Equity

- Justice40 Census Tracts
- Federal government identified as “disadvantaged”



Enforcement and Updated Signage

BCDOT will be adding a citation for blocking an EV charger

- Maryland citation and fine located in MD Transportation Article, § 21-1003.2
- Currently updating signage at EV chargers on city property



Recommended signage provided by State Highway Administration (example from Waldorf, MD)



What is most important for public EV charging?

[Join at Menti.com and use code 1162 7926]

- a. Near restaurants, shopping, and other commercial uses
- b. Near residential homes
- c. Access to transit
- d. Access to highways
- e. Includes restrooms, seating areas, or other amenities
- f. Affordability

What would you like to see in the future of EV charging in Baltimore City?



[Join at Menti.com and use code 1162 7926]



Resources

- [Plugshare.com](https://www.plugshare.com)
- [Parking.baltimorecity.gov](https://www.parking.baltimorecity.gov)
- Maryland ZEEVIC



Questions?



Closing Remarks

Would you be interested in any of the following

- Attending an In-Person Event to meet city staff, see the city's EV fleet, and learn how public charging works
- Being added to our EV Mailing list

Contact information: nicole.caesar@bcparking.com